


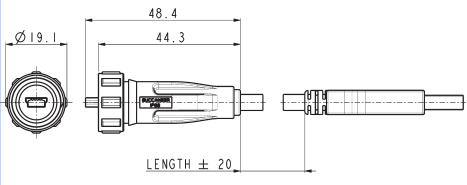
- ⊕ IP68, Tested in accordance with EN60529:1992+A2:2013
- ⊕ IP69K, Tested in accordance with DIN 40050/Part 9 IP6k9k
- ⊕ USB version 2.0 performance
- ⊕ Plug and play capability
- ⊕ Shielded system
- ⊕ Overmoulded cables
- ⊕ Screw coupling
- ⊕ PCB versions
- ⊕ Dust and waterproof to EN60529
- ⊕ Data rates up to 480Mbps
- ⊕ Hot pluggable, standard 4 Contacts interface
- ⊕ High noise immunity
- ⊕ Tamperproof construction
- ⊕ Secure, proven locking system
- ⊕ Direct mounting or via adaptor leads
- ⊕ EN60068-2-52 Test Kb Salt Mist (Cyclic) Marine Severity Level 1

Sealed Mini 'B' to Standard 'A'



PX0441

- IP68 Sealed Mini 'B' Plug to Standard 'A' Plug
- Fully overmoulded construction
- Available in 2, 3 & 4.5m lengths
- Mates with PX0443, PX0446, PX0447, PX0456, PX0457 & PX0458



Sealed Mini 'B' to Mini 'A'



PX0442

- IP68 Sealed Mini 'B' Plug to Mini 'A' Plug
- Fully overmoulded construction
- Available in 2, 3 & 4.5m lengths
- Mates with PX0443, PX0446, PX0447, PX0456, PX0457 & PX0458



Sealed Mini 'A' to Mini 'B'



PX0444

- IP68 Sealed Mini 'A' Plug to Mini 'B' Plug
- Fully overmoulded construction
- Available in 2, 3 & 4.5m lengths
- Mates with PX0456, PX0457 & PX0458



P1	PIN ASSIGNMENT	P2
1	RED	1
2	WHITE	2
3	GREEN	3
4		4
5	BLACK	5
5	BRAID	5

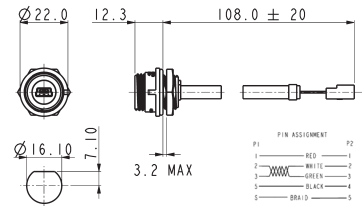
Part No.	Length	Description
PX0441/2M00	2.0m	IP68 Sealed Mini 'B' to Standard 'A' Type USB
PX0441/3M00	3.0m	IP68 Sealed Mini 'B' to Standard 'A' Type USB
PX0441/4M50	4.5m	IP68 Sealed Mini 'B' to Standard 'A' Type USB
PX0442/2M00	2.0m	IP68 Sealed Mini 'B' to Mini 'A' Type USB
PX0442/3M00	3.0m	IP68 Sealed Mini 'B' to Mini 'A' Type USB
PX0442/4M50	4.5m	IP68 Sealed Mini 'B' to Mini 'A' Type USB
PX0444/2M00	2.0m	IP68 Sealed Mini 'A' to Mini 'B' Type USB
PX0444/3M00	3.0m	IP68 Sealed Mini 'A' to Mini 'B' Type USB
PX0444/4M50	4.5m	IP68 Sealed Mini 'A' to Mini 'B' Type USB

Front Panel Mounting Connector



PX0443

- Mini 'B' Type Receptacle
- Leaded with 5 way crimp, for use with PCB header
- Mates with PX0441 & PX0442 type cables



Part no.

Description

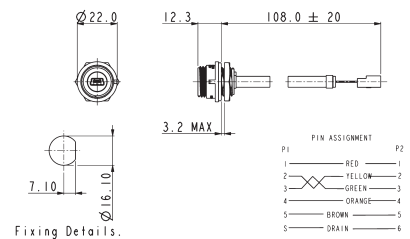
PX0443 IP68 B type Mini USB, front panel mounted. 5 way crimp connector at rear.
PX0459 As PX0443 with exposed braid for use with PX0464 screening can

Front Panel Mounting Connector



PX0456

- Mini 'AB' Type Receptacle
- Leaded with 6 way crimp, for use with PCB header
- Mates with PX0441, PX0442 & PX0444 type cables



Part no.

Description

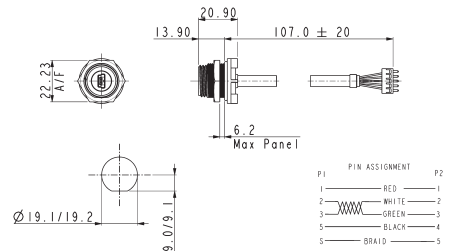
PX0456 IP68 AB type Mini USB, front panel mounted. 6 way crimp connector at rear.

Rear Panel Mounting Connector



PX0446

- Mini 'B' Type Receptacle
- Leaded with 5 way header
- Mates with PX0441 & PX0442 type cables

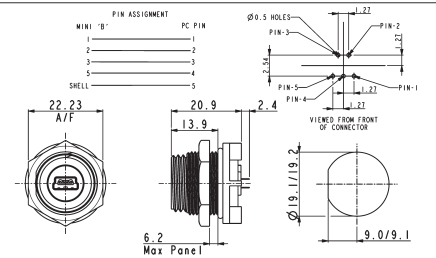


Rear Panel Mounting Connector



PX0447

- Mini 'B' Type Receptacle
- With Plugs for direct PCB mounting
- Mates with PX0441 & PX0442 type cables



Part no.

Description

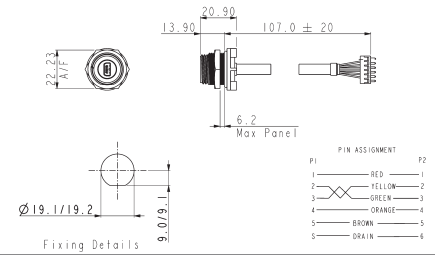
PX0446 IP68 B type Mini USB, rear panel mounted. 5 way header connector at rear.
PX0447 IP68 B type Mini USB, rear panel mounted. PCB terminals at rear.

Rear Panel Mounting Connector



PX0457

- Mini 'AB' Type Receptacle
- Leaded with 6 way header
- Mates with PX0441, PX0442 & PX0444 type cables

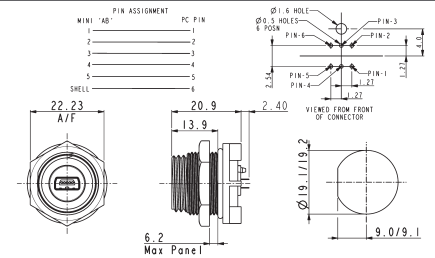


Rear Panel Mounting Connector



PX0458

- Mini 'AB' Type Receptacle
- With Plugs for direct PCB mounting
- Mates with PX0441, PX0442 & PX0444 type cables



Part no. **Description**

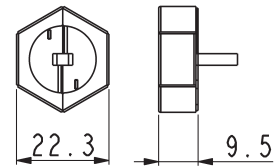
PX0457	IP68 AB type Mini USB, rear panel mounted. 6 way header connector at rear.
PX0458	IP68 AB type Mini USB, rear panel mounted. PCB terminals at rear.

Screening Can



PX0464

- Maintains cable screening directly to panel
- Shielding can clips around the panel fixing nut
- For use on PX0459



Accessories



- Sealing caps to maintain IP rating when connectors are not in use
- PCB headers for use with PX0443 & PX0456

Part no. **Description**

PX0485	Sealing cap for use with PX0441, PX0442 & PX0444
PX0480	Sealing cap for use with PX0443 & PX0456
PX0484	Sealing cap for use with PX0446, PX0447, PX0457 & PX0458
14191	5 way straight header
14192	5 way right angle header
14563	6 way straight header
14564	6 way right angle header

Cables & connectors

Mechanical

Sealing	IP68, EN60529:1992+A2:2013 (10m depth for 2 weeks) IP69K, Tested in accordance with DIN 40050/Part 9 IP6k9k
Operating temperature	-35C to +70C
Salt Mist	EN60068-2-52 Test Kb Salt Mist (Cyclic) Marine Severity Level 1

Electrical

No. of Contacts	4 and 5
Current rating	1A
Voltage rating	30V AC, 42V DC
Contact resistance	50m Ω max.
Performance	USB version 2.0

Materials - Overmoulded

Overmould material	PVC (black)
Flammability rating	UL94V-0

Materials - Re-wireable and Panel Connectors

Shell material	Steel
Shell plating	Nickel
Contact material	Copper Alloy
Contact plating	50 micro inch Gold
Connector body & locking ring	Polyester
Panel connector	Nylon 6
Flammability rating	UL94V-0
'O' rings	Nitrile
Mating cycles	5,000
RoHS	Compliant

Materials - cable

Cable Jacket	PVC (black)
Screen	Tinned copper braid
Flammability	UL94V-0
RoHS	Compliant

Length:	Dia	Conductors Signal	Conductors Power
2m	4.8mm	2 x 28AWG	2 x 24AWG
3m	5.0mm	2 x 28AWG	2 x 22AWG
5m	5.2mm	2 x 25AWG	2 x 20AWG

Cable construction - PX0441, PX0442, PX0444

