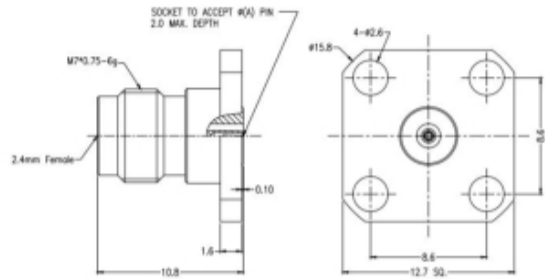


# RF240A4PCCE Datasheet

## Product Name // 2.4mm Plug Straight 4 Hole Flange RF Connector

[View Product Page](#)

\* Representative product image only



### // Product Description:

- ⊕ 2.4mm Plug Straight 4 Hole Flange RF Connector
- ⊕ Maximum Voltage: 150V
- ⊕ Temperature range: -40°C to +85°C
- ⊕ Frequency range: 0GHz - 50GHz
- ⊕ VSWR: <1.30
- ⊕ Dielectric withstanding Voltage: >500V
- ⊕ Impedance: 50Ohm
- ⊕ Body Material: Stainless Steel Passivation
- ⊕ Contact Material: Beryllium Copper

### // General Information:

Product Display Title:	2.40mm Series Socket 4 Hole Flange
Product Family:	Radio Frequency Connectors
Product Series:	2.40mm Series
Body Length:	12.70mm
Body Material:	Stainless Steel Passivation
Centre Contact Retention Force:	>20N
Contact Pin Material:	Beryllium Copper
Min Coupling Torque:	0.80Nm
Max Coupling Torque:	1.10Nm
Dielectric Withstanding Voltage:	>500V
Durability:	>500 cycles
Flange Mount Length:	12.70mm
Function:	Male Flange Mount RF Connector
Impedance:	50Ohm
Insulation Resistance:	>5000MOhm
Insulator:	UNFILLED ULTEM 1000/PEI
Max Operating Temperature:	+85°C
Min Operating Temperature:	-40°C
Mount Hole Distance:	8.60mm
Min Operating Frequency:	0GHz
Max Operating Frequency:	50GHz
Socket Diameter:	0.51mm
Voltage Max:	150V
Vswr:	<1.30

#### // Product PDF Links

[2.40mm Series Product Datasheet](#)

#### // Product 3D CAD Model Links

[RF240A4PCCE3D CAD Model](#)