

Industry Application Report

October 2020



Fish Feed Systems.

Catering for the need to feed fish populations large and small, a feed system is crucial for maintaining the health and well-being of the aquatic life, as under feeding or overfeeding can have dramatic effects and can also lead to an increase in wasted food product. Although feeding can be done by hand, if the aquatic environment is large, this can be easily maintained through a Feeding System.

One area that required such a system was a fish farm, who's equipment regulated a controlled and monitored feed delivery. Such a system required an IP Rated Power and Data connector for uninterrupted communication – the Standard Buccaneer Series proved to be the ideal connector for this application.

- ⬡ Potential Markets: Livestock / Agriculture
- ⬡ These Environmentally Sealed Power Connectors are IP68 & IP69K Rated - setting the gold standard for Dust & Waterproof Circular Connectors



Products Related To This Industry:



PX0736 Series

Standard Series Buccaneer

Water and dustproof to IP68 when mated with compatible connector. Plug or Socket. 2, 3, 4, 6, 7, 9, 12, 25 Pole with leading Earth contact on 3 Pole. Socket versions. Screw, Crimp, Crimp/Solder Terminations depending on part code and number of Poles. Screw contacts supplied fitted, Crimp contacts supplied loose.



PX0730/P Series

Standard Series Buccaneer

Water and dustproof to IP68 when mated with compatible connector. Single hole fixing. Plug or Socket. 2, 3, 4, 6, 7, 9, 12, 25 Pole with leading Earth contact on 3 Pole Socket versions. Screw, Crimp, Crimp/Solder Terminations available depending on part code and number of Poles.



PX0737 Series

Standard Series Buccaneer

Water and dustproof to IP68 when mated with compatible connector. Plug or Socket. 2, 3, 4, 6, 7, 9, 12, 25 Pole with leading Earth contact on 3 Pole Socket versions. Screw, Crimp, Crimp/Solder Terminations available depending on part code and number of Poles. Screw contacts supplied fitted, Crimp contacts supplied loose.



PX0700 Series

Standard Series Buccaneer

Water and dustproof to IP68 when mated with compatible connector. Plug or Socket. 2, 3, 4, 6, 7, 9, 12, 25 Pole with leading Earth contact on 3 Pole Socket versions. Cable acceptance up to 14mm diameter with PVC or PU jackets. PX0734 Sealing Cap available separately to maintain IP rating of unmated connectors.



Industrial Computer // Workstations.

Certain harsh environments that produce strong vibrations, extreme temperatures or even dust and water exposure require what is known as 'ruggedized' or 'rugged' computers in order to operate without interference from said environments.

The Standard Buccaneer Ethernet and USB connects were designed into rugged computers in environments where conventional PCs were unsuitable - meaning that toughened workstations required toughened connections that were equally robust.

- ⬡ Potential Markets: Data & Telecoms / Industrial / Construction
- ⬡ Ethernet Buccaneers IP68 & IP69K Rated - Tested in accordance with DIN 40050/Part 9 IP6k9k
- ⬡ EN60068-2-52 Test Kb Salt Mist (Cyclic) Marine Severity Level 1



Products Related To This Industry:



PX0833 / PX0893

Standard Series Ethernet

Front Panel Mounting Connector. Water and dustproof to IP68 when mated with compatible connector. Single hole fixing. Supplied with panel sealing gasket. CAT5e or Cat6a shielded coupler - standard RJ45 patchcord can be plugged into rear. PX0833/E or PX0893/E version has additional Earth wire.



PX0839

Standard Series Ethernet

Rear Panel Mount Connector. Water and dustproof to IP68 when mated with compatible connector. CAT5e shielded socket. Supplied with panel sealing gasket. Choice of Termination. Mates with PX0834, PX0836, PX0837, PX0838 Standard Series Flex Cable Connectors.



PX0834 / PX0894

Standard Series Ethernet

Rewirable Flex Cable Connector. Water and dustproof to IP68 when mated with compatible connector. Supplied with shielded RJ45 plug. PX0834/A & PX0894/A has Cable Glands optimised for PUR jacket cable to maintain CAT5e & Cat6a performance. PX0834/B & PX0894/B can be used with cable 3.5mm-8mm diameter.



PX0870 / PX0890

Standard Series Ethernet

Flanged Mounting Connector. Water and dustproof to IP68 when mated with compatible connector. Supplied with panel sealing gasket and screw sealing washers. CAT5e or Cat6a shielded coupler - standard RJ45 patchcord can be plugged into rear. PX0870/E version has additional Earth wire.

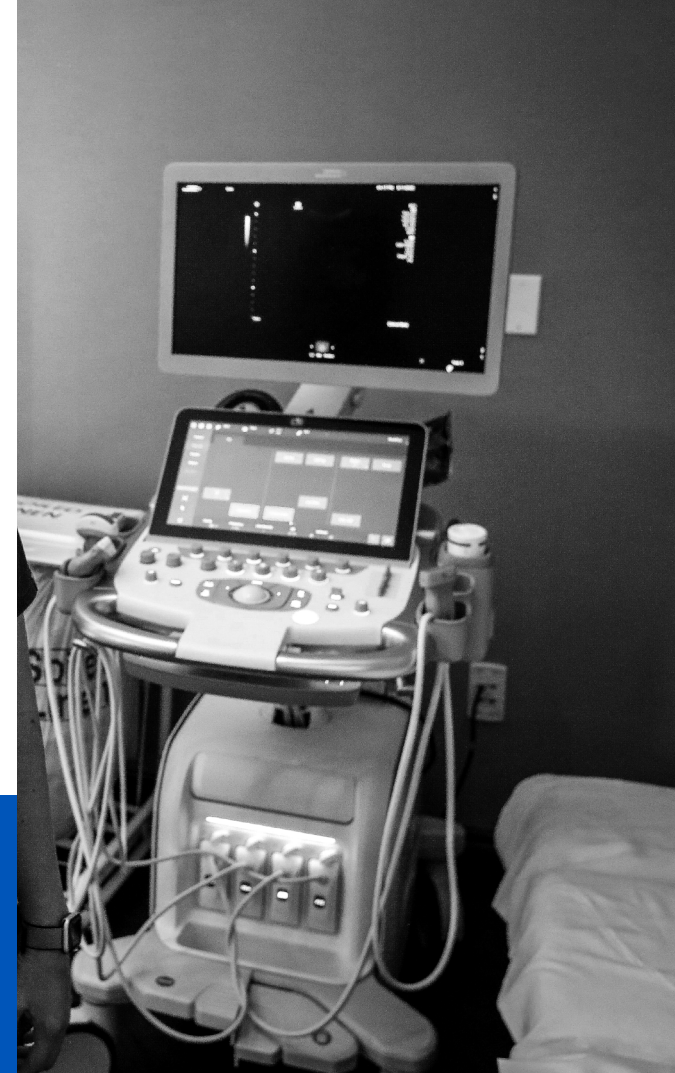


Ultrasonic Equipment.

Ultrasonic Testing (otherwise known as UT) uses high frequency sound waves as a means of 'non-destructive' testing in order to measure the mass of a targeted material. Alongside medical applications ultrasonic testing can also be carried out to measure and assess corrosion on pipes and valves, as well as on materials used for construction such as steel.

The Arcoelectric 1500 Series Rocker was used as the main activation switch on ultrasonic equipment used for medical applications - which combined with a BioCote can assist in added antimicrobial protection.

- ⬡ Potential Markets: Hospitals / Veterinary / Industrial
- ⬡ Single or Twin units: Any combination of two individual 1500, 1510, 1520 Series Switches and 0430 Series Indicators can be assembled into a single unit



Products Related To This Industry:



1500 Series Rocker Switches



Splash resistant rocker versions available. ENEC, UL, CSA approved (some approvals do not apply to some Termination types). Single or Twin units: Any combination of two individual 1500, 1510, 1520 Series Switches and 0430 Series Indicators can be assembled into a single unit Termination: 6.3 x 0.8 QC, 4.8 x 0.8 QC, 2.8 x 0.8 Tab (not available for 1300 Series switches).



8800 Series Rocker Switches



Range of ultra thin Rocker Switches. ENEC, UL, CSA approved (approvals and ratings can vary with function - see technical data for details). Single Pole. Curved rocker. Choice of: Termination: 4.8 x 0.8 QC, Solder Tag, PCB mount. Body colour: Black, Red, White. Plus other options available.



Minature Range Rocker Switches



Extensive range of miniature Rocker Switches and matching Indicators. ENEC, UL, CSA approved (approvals and ratings can vary with function. Industry standard panel cut-out. Single Pole (8500, 8503 Series), Double Pole (8550, 8553 Series) and matching Indicator Only (8580 Series) versions all in same body size



1250SP / 1250 Series Rocker Switches



Rocker Switches. ENEC, UL, CSA approved (approvals and ratings can vary with function - see technical data for details). Single Pole (1250SP Series) and Double Pole (1250 Series) in same body size. High inrush tolerance.

Airport Flood Lighting.

Floodlighting consists of a high-intensity artificial light source that is broad-beamed. The most conventional users of flood lights is for the illumination of outdoor environments such as sports fields during no or low light conditions.

Airports are another key environment that make use of flood lights because they consist of a large surface area in which planes need to navigate safely. The Bulgin 6000 Series Power connector provided a secure and sealed power connections and was used for high mast lighting, critical for such an application.

- ⬡ Potential Markets: Commercial / Stadiums
- ⬡ The 6000 Series Power connector is water & Dustproof to IP66, IP68, IP69K when mated
- ⬡ Choice of body material depending on part code: Plastic (PXP) or Metal (PXM)



Products Related To This Industry:



PXP6010 / PXM6010

6000 Series Buccaneer

Flex Cable Connectors. Water and dustproof to IP66, IP68, IP69K when mated with compatible connector. 30 degree push twist locking, tamperproof lock prevents accidental un-mating. Plug or Socket. 2, 3, 8, 16, 22 Pole with leading Earth contact on 3 Pole versions.



PXP6012 / PXM6012

6000 Series Buccaneer

Front Panel Mount Connectors. Water and dustproof to IP66, IP68, IP69K when mated with compatible connector. 30 degree push twist locking, tamperproof lock prevents accidental un-mating. Plug or Socket. 2, 3, 8, 16, 22 Pole with leading Earth contact on 3 Pole versions.



PXP6011 / PXM6011

6000 Series Buccaneer

Flex In-Line Cable Connectors. Water and dustproof to IP66, IP68, IP69K when mated with compatible connector. 30 degree push twist locking, tamperproof lock prevents accidental un-mating. Plug or Socket. 2, 3, 8, 16, 22 Pole with leading Earth contact on 3 Pole versions.



Commercial Laundry Equipment.

Various equipment is used in the commercial laundry sector across different equipment that can handle the washing, drying and finishing to clothes put through the laundry process. The final stage to this process is the pressing or finishing which can leave clothing crisp and crease free.

Finishing tables and press equipment used for commercial grade laundry markets combined the use of Bulgin Rocker Switches and Indicators into the key controls for functionality.

- ⬡ Potential Markets: Hotels / Leisure
- ⬡ Bulgin Rocker Switches include a choice of single & double pole options in various sizes, colours, terminations, actuator types & ratings up to 16A, 250Vac



Products Related To This Industry:



Double Pole Range

Rocker Switches

Range of Double Pole and 3 Position Selective Rocker Switches. Standard (1550 Series), high inrush tolerant (1350 Series), 3 position selective (1484, 1487 Series) and Indicator Only version (0480 Series). Splash resistant rocker versions available.



8800 Series

Rocker Switches

Range of ultra thin Rocker Switches. ENEC, UL, CSA approved (approvals and ratings can vary with function - see technical data for details). Single Pole. Curved rocker. Choice of: Termination: 4.8 x 0.8 QC, Solder Tag, PCB mount. Body colour: Black, Red, White. Plus other options available.



Indicator Range

6.3x0.8 QC / 4.8x0.8 QC / 2.8x0.8 Tab

Illumination and operating voltage: Neon: 100V-130V, 200V-250V. LED: 2VDC-2.2VDC, 6VDC, 12VDC, 24VDC, 110VAC-230VAC (other voltages available). Filament: 6V, 12V-14V, 24V-28V. Lens colour: Neon, Filament: Red, Amber, Green, Clear. Blue also available to special order. LED: Red, Yellow, Green, White, Blue.



Square Lens Indicator

3x0.8 QC / 4.8x0.8 QC / 2.8x0.8 Tab

Illumination and operating voltage: Neon: 100V-130V, 200V-250V. LED: 2VDC-2.2VDC, 6VDC, 12VDC, 24VDC, 110VAC-230VAC (other working voltages available). Filament: 6V, 12V-14V, 24V-28V. Lens colour: Neon, Filament: Red, Amber, Green, Clear. Blue also available to special order. LED: Red, Yellow, Green, White, Blue.





www.bulgin.com

Europe

Bulgin
Broers Building
JJ Thomson Avenue
Cambridge CB3 0FA UK
tel: +44 (0) 1803 407757
e: info@bulgin.com

The Americas

Bulgin
11849 Telegraph Road
Santa Fe Springs
CA 90670 USA
tel: +1 760-343-3650
e: info@bulgin.com

Asia Pacific

Bulgin
11849 Telegraph Road
Santa Fe Springs
CA 90670 USA
tel: +1 760-343-3650
e: info@bulgin.com

*All images featured are for illustration purposes and
do not always reflect the actual product*