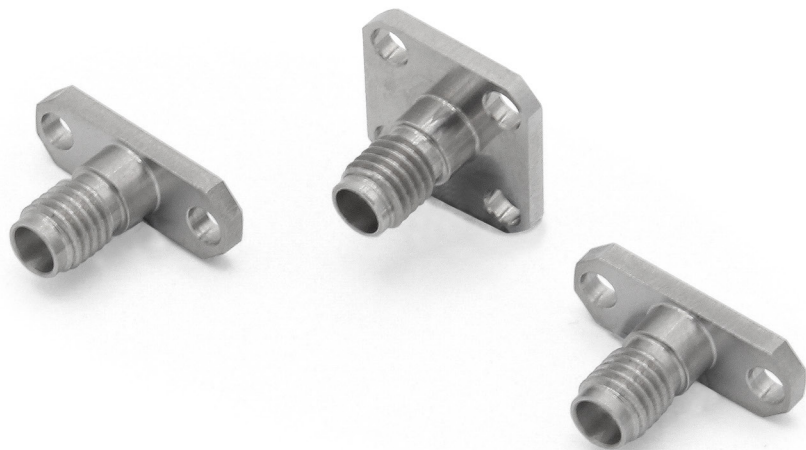


The Bulgin **SSMA connector series** are micro-miniature, **precision** connectors with **excellent electrical performance**. Available for both **semi-rigid** and **flexible coaxial cables**, they are ideal for **high-frequency applications**.

The SSMA connector range offers a smaller version of the SMA connector and is widely used in microwave communications. It has stainless steel construction that provides mechanical ruggedness for high reliability in a compact size. These connectors are widely used in Radar, Military, Aerospace, Instrumentation, Test and Measurement and Satellite Communication Equipment (SATCOM).



Key Features:

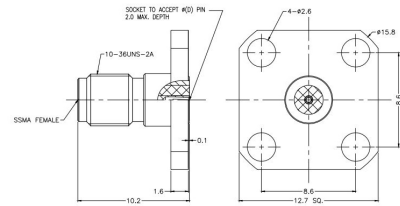
- ⬡ 50-ohm Impedance
- ⬡ Insulation resistance >5000MΩ
- ⬡ Durability >500 Cycles
- ⬡ Available in Male and Female Threads
- ⬡ Available in Plug or Jack
- ⬡ Beryllium Copper Contact Pin
- ⬡ Body Material available in Stainless Steel Passivation

SSMA Series Socket 4 Hole Flange



RFSSMAA4JCCA

- ⊕ Max Voltage 335V
- ⊕ Operating Temperature -65C to +165C
- ⊕ Frequency Range 0-40GHz
- ⊕ VSWR <1.30
- ⊕ Dielectric withstanding Voltage >500V
- ⊕ Available with Extended PTFE



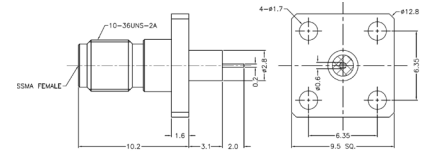
Part Number	Plug or Jack	Flange Mount Length	Mount Hole Distance	Socket Diameter
RFSSMAA4JCCA	Jack	12.70mm	8.60mm	0.23mm
RFSSMAA4JCCB	Jack	12.70mm	8.60mm	0.30mm
RFSSMAA4JCCC	Jack	12.70mm	8.60mm	0.38mm
RFSSMAA4JCCD	Jack	12.70mm	8.60mm	0.46mm
RFSSMAA4JCCE	Jack	12.70mm	8.60mm	0.51mm
RFSSMAA4JAAA	Jack	9.50mm	6.35mm	0.23mm
RFSSMAA4JAAB	Jack	9.50mm	6.35mm	0.30mm
RFSSMAA4JAAC	Jack	9.50mm	6.35mm	0.38mm
RFSSMAA4JAAD	Jack	9.50mm	6.35mm	0.46mm
RFSSMAA4JAAE	Jack	9.50mm	6.35mm	0.51mm

SSMA Series Pin with Extended PTFE 4 Hole Flange



RFSSMAA4JAACFEC

- ⊕ Max Voltage 335V
- ⊕ Operating Temperature -65C to +165C
- ⊕ Frequency Range 0-40GHz
- ⊕ VSWR <1.30
- ⊕ Dielectric withstanding Voltage >500V
- ⊕ Available with Extended PTFE
- ⊕ Flange Mount Length 9.50mm
- ⊕ Mount Hole Distance 6.35mm



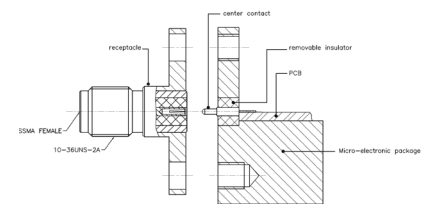
Part Number	Plug or Jack	Pin Diameter	Pin Length	Extended PTFE Diameter	Extended PTFE Length
RFSSMAA4JAACFEC	Jack	0.60mm	2.00mm	2.80mm	3.10mm

SSMA Series Socket 2 Hole Flange



RFSSMAA2JEGA

- ⊕ Max Voltage 335V
- ⊕ Operating Temperature -65C to +165C
- ⊕ Frequency Range 0-40GHz
- ⊕ VSWR <1.30
- ⊕ Dielectric withstanding Voltage >500V
- ⊕ Available with Extended PTFE



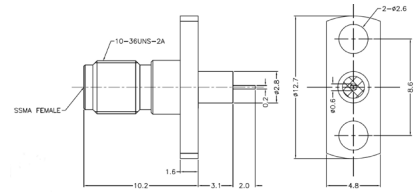
Part Number	Plug or Jack	Flange Mount Length	Mount Hole Distance	Socket Diameter
RFSSMAA2JEGA	Jack	15.80mm	12.20mm	0.23mm
RFSSMAA2JEGB	Jack	15.80mm	12.20mm	0.30mm
RFSSMAA2JEGC	Jack	15.80mm	12.20mm	0.38mm
RFSSMAA2JEGD	Jack	15.80mm	12.20mm	0.46mm
RFSSMAA2JEJE	Jack	15.80mm	12.20mm	0.51mm
RFSSMAA2JCEA	Jack	12.70mm	8.90mm	0.23mm
RFSSMAA2JCEB	Jack	12.70mm	8.90mm	0.30mm
RFSSMAA2JCEC	Jack	12.70mm	8.90mm	0.38mm
RFSSMAA2JCED	Jack	12.70mm	8.90mm	0.46mm
RFSSMAA2JCEE	Jack	12.70mm	8.90mm	0.51mm

SSMA Series Pin with Extended PTFE 2 Hole Flange



RFSSMAA2JCCAFEC

- ⊕ Max Voltage 335V
- ⊕ Operating Temperature -65C to +165C
- ⊕ Frequency Range 0-40GHz
- ⊕ VSWR <1.30
- ⊕ Dielectric withstanding Voltage >500V
- ⊕ Available with Extended PTFE
- ⊕ Flange Mount Length 12.70mm
- ⊕ Mount Hole Distance 8.60mm



Part Number	Plug or Jack	Pin Diameter	Pin Length	Extended PTFE Diameter	Extended PTFE Length
RFSSMAA2JCCAFEC	Jack	0.30mm	2.00mm	2.80mm	3.10mm

---

**Electrical:**

Insulation Resistance:	>5000MΩ
Impedance:	50Ω
Centre Contact Resistance:	<5.0mΩ
Outer Contact Resistance:	<2.5mΩ

---

**Mechanical:**

Centre Contact Retention:	>20N
Coupling Torque:	0.80Nm to 1.10Nm
Coupling Torque RPC N:	1.36Nm
Cycles:	>500

---

**Material**

Body:	Passivation of Stainless Steel
Contact:	Beryllium Copper
Insulator:	Adapter ASTM D 1710
RoHS:	Compliant