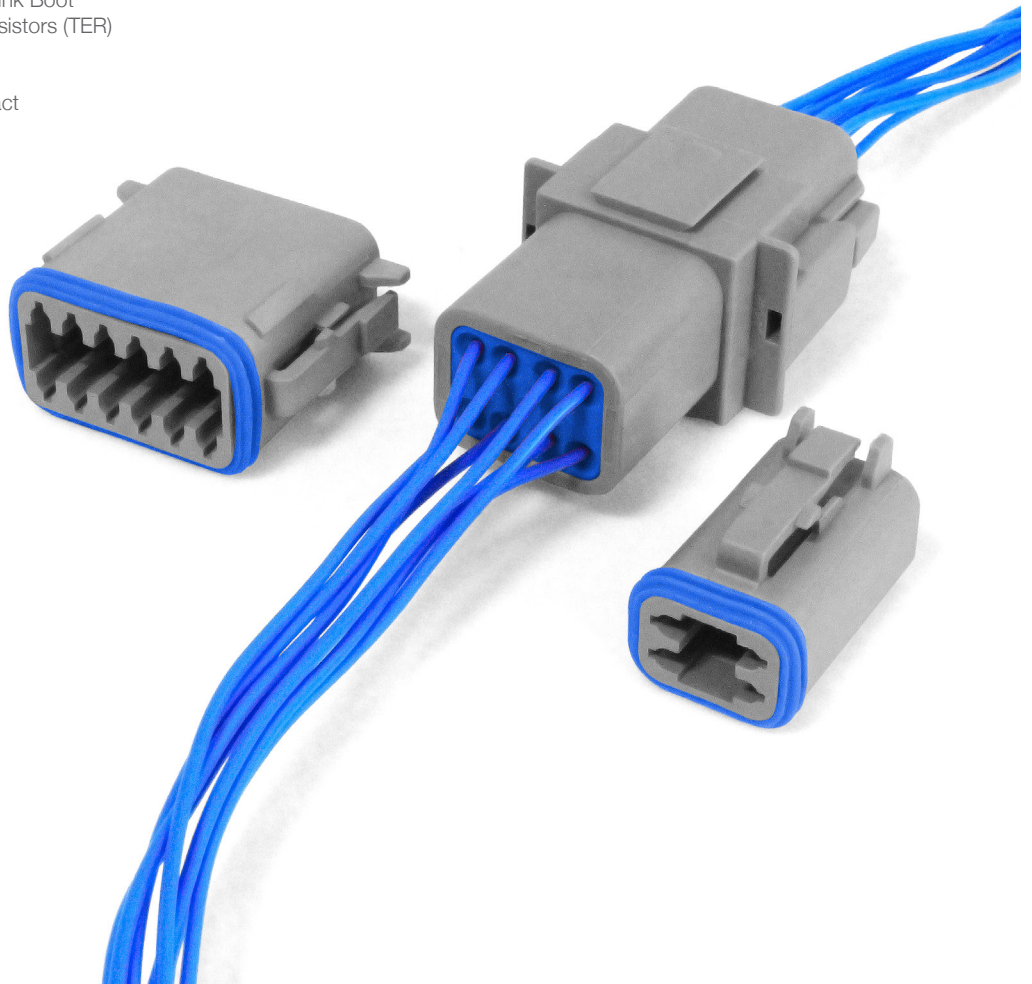


The Bulgin Rectangular Connector range offers a reliable, rugged solution for cable to cable applications in harsh environments with its environmentally sealed range of products.

The series has a male and female option, as well as modifications such as enhanced seal retention, protective end caps, shrink boot adapters, welded flange, terminating resistors and a Y-Type connector for the automotive industry.

Key Features:

- ⬢ 2, 3, 4, 6, 8 & 12 Contact Count
- ⬢ IP68
- ⬢ Choice of Enhanced Seal Retention (ESR), Protective End Caps (PEC), Shrink Boot Adapters (SBA), Terminating Resistors (TER) and a Y-Type Connector (YTY)
- ⬢ Wedge-locks available for contact retention and alignment
- ⬢ Accepts 14 - 20 AWG

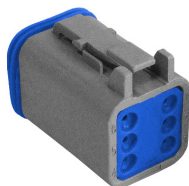


RECTANGULAR

Standard Rectangular Connectors

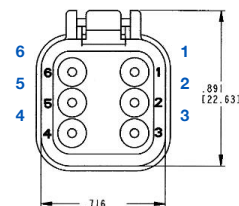


Standard Rectangular Connectors Male



PX0100

- 2, 3, 4, 6, 8 & 12 Contacts
- Male housing
- Socket contacts
- Available in grey and black
- Additional options available



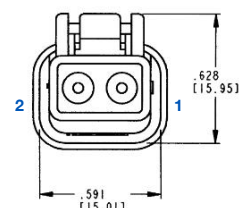
Part Number	Contacts	Key	Termination	Colour	Additional
PX0100S02BK	2	-	Crimp	Black	-
PX0100S02GY	2	-	Crimp	Grey	-
PX0100S03BK	3	-	Crimp	Black	-
PX0100S03GY	3	-	Crimp	Grey	-
PX0100S04BK	4	-	Crimp	Black	-
PX0100S04GY	4	-	Crimp	Grey	-
PX0100S06BK	6	-	Crimp	Black	-
PX0100S06GY	6	-	Crimp	Grey	-
PX0100S08AGY	8	A	Crimp	Grey	-
PX0100S08ABK	8	A	Crimp	Black	-
PX0100S12AGY	12	A	Crimp	Grey	-
PX0100S12ABK	12	A	Crimp	Black	-

Standard Rectangular Connectors Male - ESR



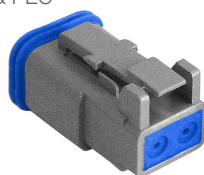
PX0102

- 2 Contacts
- Male housing
- Enhanced seal retention
- Socket contacts
- Available in black
- Additional options available



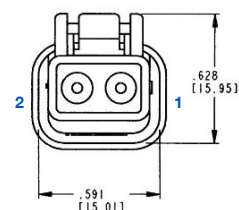
Part Number	Contacts	Key	Termination	Colour	Additional
PX0102S02BK	2	-	Crimp	Black	ESR

Standard Rectangular Connectors Male - ESR & PEC



PX0103

- 2 Contacts
- Male housing
- Enhanced seal retention & protective end cap
- Socket contacts
- Available in grey
- Additional options available



Part Number	Contacts	Key	Termination	Colour	Additional
PX0103S02GY	2	-	Crimp	Grey	ESR & PEC

RECTANGULAR Standard Rectangular Connectors

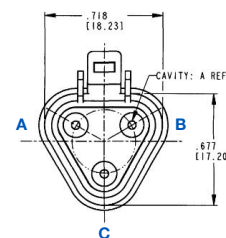


Standard Rectangular Connectors
Male - PEC



PX0105

- 2, 3, 4, 6, 8 & 12 Contacts
- Male housing
- Protective end cap
- Socket contacts
- Available in grey and black
- Additional options available



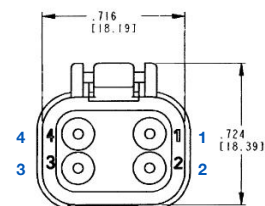
Part Number	Contacts	Key	Termination	Colour	Additional
PX0105S02BK	2	-	Crimp	Black	PEC
PX0105S02GY	2	-	Crimp	Grey	PEC
PX0105S03BK	3	-	Crimp	Black	PEC
PX0105S03GY	3	-	Crimp	Grey	PEC
PX0105S04BK	4	-	Crimp	Black	PEC
PX0105S04GY	4	-	Crimp	Grey	PEC
PX0105S06BK	6	-	Crimp	Black	PEC
PX0105S06GY	6	-	Crimp	Grey	PEC
PX0105S08ABK	8	A	Crimp	Black	PEC
PX0105S08AGY	8	A	Crimp	Grey	PEC
PX0105S12AGY	12	A	Crimp	Grey	PEC
PX0105S12ABK	12	A	Crimp	Black	PEC

Standard Rectangular Connectors
Male - SBA



PX0108

- 2, 3 & 4, 6 & 12 Contacts
- Male housing
- Shrink boot adapter
- Socket contacts
- Available in grey
- Additional options available



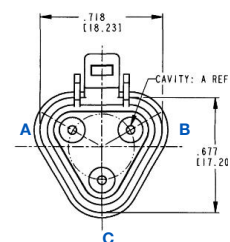
Part Number	Contacts	Key	Termination	Colour	Additional
PX0108S02GY	2	-	Crimp	Grey	SBA
PX0108S03GY	3	-	Crimp	Grey	SBA
PX0108S04GY	4	-	Crimp	Grey	SBA
PX0108S06GY	6	-	Crimp	Grey	SBA
PX0108S12AGY	12	-	Crimp	Grey	SBA

Standard Rectangular Connectors
Male - TER



PX0110

- 3 Contacts
- Male housing
- Terminating resistor
- Socket contacts
- Available in grey
- Additional options available



Part Number	Contacts	Key	Termination	Colour	Additional
PX0110S03GY	3	-	Crimp	Grey	TER

RECTANGULAR Standard Rectangular Connectors

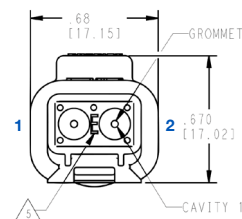


Standard Rectangular Connectors Female



PX0101

- 2, 3, 4, 6, 8 & 12 Contacts
- Female housing
- Plug contacts
- Available in grey and black
- Additional options available



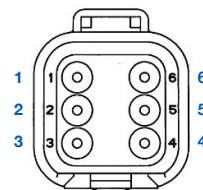
Part Number	Contacts	Key	Termination	Colour	Additional
PX0101P02BK	2	-	Crimp	Black	-
PX0101P02GY	2	-	Crimp	Grey	-
PX0101P03BK	3	-	Crimp	Black	-
PX0101P03GY	3	-	Crimp	Grey	-
PX0101P04BK	4	-	Crimp	Black	-
PX0101P04GY	4	-	Crimp	Grey	-
PX0101P06BK	6	-	Crimp	Black	-
PX0101P06GY	6	-	Crimp	Grey	-
PX0101P08ABK	8	A	Crimp	Black	-
PX0101P08AGY	8	A	Crimp	Grey	-
PX0101P12ABK	12	A	Crimp	Black	-
PX0101P12AGY	12	A	Crimp	Grey	-

Standard Rectangular Connectors Female - PEC



PX0106

- 2, 3, 4, 6, 8 & 12 Contacts
- Female housing
- Protective end cap
- Plug contacts
- Available in grey and black
- Additional options available



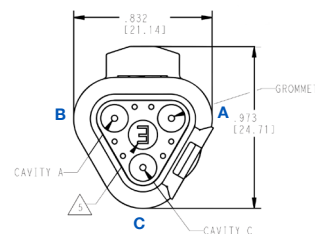
Part Number	Contacts	Key	Termination	Colour	Additional
PX0106P02BK	2	-	Crimp	Black	PEC
PX0106P02GY	2	-	Crimp	Grey	PEC
PX0106P03BK	3	-	Crimp	Black	PEC
PX0106P03GY	3	-	Crimp	Grey	PEC
PX0106P04BK	4	-	Crimp	Black	PEC
PX0106P04GY	4	-	Crimp	Grey	PEC
PX0106P06BK	6	-	Crimp	Black	PEC
PX0106P06GY	6	-	Crimp	Grey	PEC
PX0106P08ABK	8	A	Crimp	Black	PEC
PX0106P08AGY	8	A	Crimp	Grey	PEC
PX0106P12ABK	12	A	Crimp	Black	PEC
PX0106P12AGY	12	A	Crimp	Grey	PEC

Standard Rectangular Connectors Female - SBA



PX0109

- 2, 3, 4, 6, 8 & 12 Contacts
- Female housing
- Shrink boot adapter
- Plug contacts
- Available in grey and black
- Additional options available



Part Number	Contacts	Key	Termination	Colour	Additional
PX0109P02BK	2	-	Crimp	Black	SBA
PX0109P02GY	2	-	Crimp	Grey	SBA
PX0109P03BK	3	-	Crimp	Black	SBA
PX0109P03GY	3	-	Crimp	Grey	SBA
PX0109P04GY	4	-	Crimp	Grey	SBA
PX0109P06GY	6	-	Crimp	Grey	SBA
PX0109P08GY	8	-	Crimp	Grey	SBA
PX0109P12AGY	12	-	Crimp	Grey	SBA

RECTANGULAR

Standard Rectangular Connectors

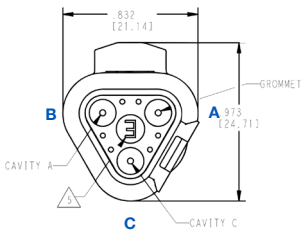


Standard Rectangular Connectors
Female - TER



PX0111

- 3 Contacts
- Female housing
- Terminating resistor
- Plug contacts
- Available in grey
- Additional options available



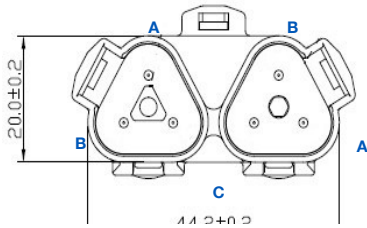
Part Number	Contacts	Key	Termination	Colour	Additional
PX0111P03GY	3	-	Crimp	Grey	TER

Standard Rectangular Connectors
Female - YTY



PX0113

- 3 Contacts
- Female housing
- Y-type connector
- Plug contacts
- Available in grey
- Additional options available



Part Number	Contacts	Key	Termination	Colour	Additional
PX0113P03GY	3	-	Crimp	Grey	YTY

Contacts



SA1000

- ⬡ Crimp plug & sockets
- ⬡ Choice of gold and nickel Plated
- ⬡ Green stripe available

Part Number	Plating	AWG	Type	Plug / Socket	Additional
SA1000/G	Nickel Plating	14	Solid	Plug	Green Stripe
SA1001/G	Nickel Plating	14	Solid	Socket	Green Stripe
SA1002/G	Nickel Plating	16 - 20	Solid	Plug	Green Stripe
SA1003/G	Nickel Plating	16 - 20	Solid	Socket	Green Stripe
SA1000	Nickel Plating	14	Solid	Plug	-
SA1001	Nickel Plating	14	Solid	Socket	-
SA1002	Nickel Plating	16 - 20	Solid	Plug	-
SA1003	Nickel Plating	16 - 20	Solid	Socket	-
SA1004	Nickel Plating	16 - 20	Stamped	Plug	Bandolier
SA1005	Nickel Plating	16 - 20	Stamped	Socket	Bandolier
SA1006	Nickel Plating	14 - 18	Stamped	Plug	Bandolier
SA1007	Nickel Plating	14 - 18	Stamped	Socket	Bandolier
SA1008	Gold Plating	14 - 18	Stamped	Plug	Bandolier
SA1009	Gold Plating	14 - 18	Stamped	Socket	Bandolier
SA1010/G	Gold Plating	14	Solid	Socket	Green Stripe
SA1011/G	Gold Plating	14	Solid	Socket	Green Stripe
SA1012	Gold Plating	16-20	Solid	Plug	-
SA1013	Gold Plating	16-20	Solid	Socket	-

Wedgelocks



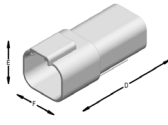
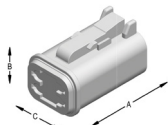
WLP12

- ⬡ Plug & sockets available
- ⬡ 2, 3, 4, 6, 8 & 12 Contact

* Wedgelocks are sold separately and are required for confirmation of alignment of contact. Please refer to the chart above to determine part required: e.g. WLP02 is required for 2 Contact female housings

Part Number	Contacts	Plug / Socket	Additional
WLP02	02	Plug	-
WLS02	02	Socket	-
WLP03	03	Plug	-
WLS03	03	Socket	-
WLP04	04	Plug	-
WLS04	04	Socket	-
WLP06	06	Plug	-
WLS06	06	Socket	-
WLP08	08	Plug	-
WLS08	08	Socket	-
WLP12	12	Plug	-
WLS12	12	Socket	-

STANDARD SERIES DIMENSIONS



	Male			Female		
Cavity	Overall Length A	Overall Height B	Overall Width C	Overall Length D	Overall Height E	Overall Width F
2	1.118 (28.4)	.628 (15.95)	.591 (15.01)	1.708 (43.38)	.670 (17.02)	.675 (17.15)
3	1.118 (28.4)	.934 (23.72)	.718 (18.23)	1.698 (43.13)	.973 (24.71)	.832 (21.13)
4	1.218 (30.94)	.724 (18.39)	.716 (18.19)	1.808 (45.92)	.776 (19.71)	.820 (20.83)
6	1.218 (30.94)	.891 (22.63)	.716 (18.19)	1.808 (45.92)	.951 (24.16)	.820 (20.83)
8	1.217 (30.91)	.776 (19.71)	1.465 (37.21)	1.798 (45.67)	1.000 (25.40)	1.435 (36.45)
12	1.218 (30.94)	.716 (18.19)	1.597 (40.56)	1.808 (46.92)	.876 (22.25)	1.597 (40.56)

* Dimensions are for reference only.

Electrical:

No Contacts:	2, 3, 4, 6, 8 & 12
Insulation Resistance:	>1000MΩ
Dielectric Strength:	No damage when exposed
Dielectric Withstanding Voltage:	1500 VAC
Operating Temperature Range:	-55°C to +125°C

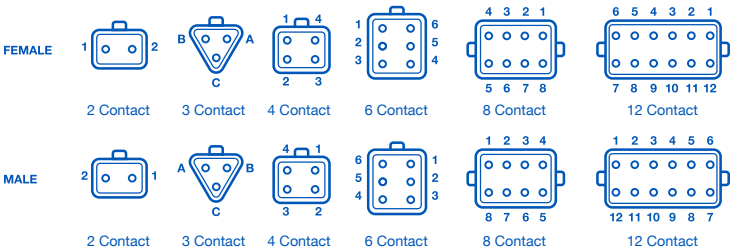
Mechanical:

Sealing:	IP68
Contact Accommodation:	14-20AWG (2.0-0.5mm2)
Termination:	Crimp terminals
Cycles:	>100

Material

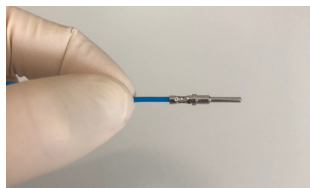
Grommet:	Silicone rubber
Insert Retainer:	Thermoplastic
Receptacle Interfacial Seal:	Silicone Rubber
Shell:	Thermoplastic
Wedgelocks:	Thermoplastic
RoHS:	Compliant

Contact Layout (Rear View)



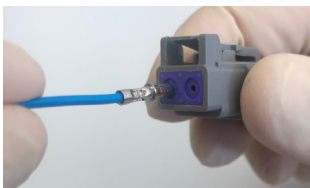
Contact Insertion Instructions

Step One:



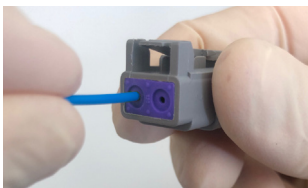
Use a previously crimped contact and wire and hold just behind the contact barrel.

Step Two:



Line the contact up with the grommet.

Step Three:



Push the contact until a click is felt. Check the contact is in place by gently tugging and confirming alignment. Repeat for number of contacts desired

Step Four:



When contacts are in place, insert the appropriate wedgelock until a click is heard. Once male and female housings are prepared the parts can be mated



PX0	XXX	X	XX	X	XX
Range	Body Type	Contact Type	Contacts	Key	Colour
PX0	100 = Male 101 = Female 102 = Male Enhanced Seal Retention 103 = Male Enhanced Seal Retention & Protective End Cap 105 = Male Protective End Cap 106 = Female Protective End Cap 108 = Male Shrink Boot Adapter 109 = Female Shrink Boot Adapter 110 = Male Terminating Resistor 111 = Terminating Resistor 113 = Female Y Type	S = Socket P = Plug	02 03 04 06 08 12	A = A Key	GY = Grey BK = Black