

Activated by the touch of a finger, our **Capacitive Switches** are ideal for many repetitive applications requiring a **rugged sealed** and **easy** to use switch solution.



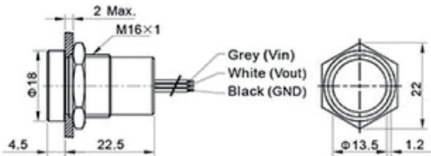
- ⬢ Sealed to IP68 and IP69K
- ⬢ Momentary or latching functions
- ⬢ Large or thin ring illumination options
- ⬢ Long life operation – 50 million of cycles
- ⬢ 16, 19, 22 or 25mm diameter options
- ⬢ Easy to use and clean
- ⬢ Extremely robust and durable – IK10 rated
- ⬢ No operating force required – ideal for repetitive applications
- ⬢ Activated by the touch of a finger – even with surgeon gloves
- ⬢ Natural, black and red anodised options as well as 316L stainless steels

16mm Illuminated



MC16

- ⬡ Illuminated
- ⬡ 300 mm lead

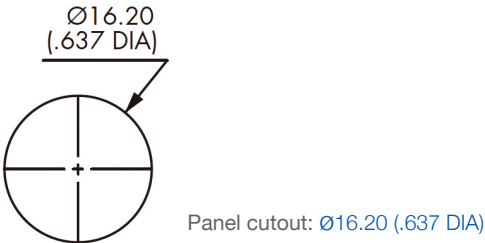


Specification

MC16

Type	Momentary / Latching
Materials	Case: Aluminium, Anodised and Stainless Steel  Multi-wire leads setion 0.22mm <sup>2</sup> (length 300mm)
Maximum Current / Voltage Rating:	500mA at 5V, 12V or 24VDC
Supply Voltage	5, 12 or 24 VDC
Contact Resistance	20mΩ
LED state for output image option	1 LED: The LED is ON when output is closed.  2 LEDs: First colour is ON when the output is open. Second colour is ON when the output is closed.
Actuating force, typically	Zero Newton's (Touch Sensitive)
Life cycle	>50 Million

Panel Cutout Dimensions



Environmental Specification

Sealing	IP68 (2m depth for >30mins) IP69K
Operating temperature	-25°C to +55°C
RoHS	Compliant

Circuit Specification

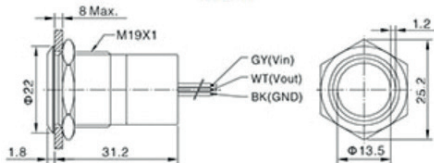
See wiring diagrams on page 50

19mm Illuminated



MC19

- ⬡ Illuminated
- ⬡ 300 mm lead

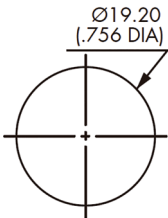


Specification

MC19

Type	Momentary / Latching
Materials	Case: Aluminium, Anodised and Stainless Steel  Multi-wire leads setion 0.22mm <sup>2</sup> (length 300mm)
Maximum Current / Voltage Rating:	500mA at 5V, 12V or 24VDC
Supply Voltage	5, 12 or 24 VDC
Contact Resistance	20mΩ
LED state for output image option	1 LED: The LED is ON when output is closed.  2 LEDs: First colour is ON when the output is open. Second colour is ON when the output is closed.
Actuating force, typically	Zero Newton's (Touch Sensitive)
Life cycle	>50 Million

Panel Cutout Dimensions



Panel cutout: 19.20 (.756 DIA)

Environmental Specification

Sealing	IP68 (2m depth for >30mins) IP69K
Operating temperature	-25°C to +55°C
RoHS	Compliant

Circuit Specification

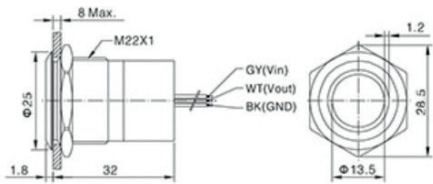
See wiring diagrams on page 50

22mm Illuminated



MC22

- ⬡ Illuminated
- ⬡ 300 mm lead

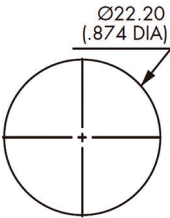


Specification

MC22

Type	Momentary / Latching
Materials	Case: Aluminium, Anodised and Stainless Steel  Multi-wire leads setion 0.22mm <sup>2</sup> (length 300mm)
Maximum Current / Voltage Rating:	500mA at 5V, 12V or 24VDC
Supply Voltage	5, 12 or 24 VDC
Contact Resistance	20mΩ
LED state for output image option	1 LED: The LED is ON when output is closed.  2 LEDs: First colour is ON when the output is open. Second colour is ON when the output is closed.
Actuating force, typically	Zero Newton's (Touch Sensitive)
Life cycle	>50 Million

Panel Cutout Dimensions



Panel cutout: 22.20 (.874 DIA)

Environmental Specification

Sealing	IP68 (2m depth for >30mins) IP69K
Operating temperature	-25°C to +55°C
RoHS	Compliant

Circuit Specification

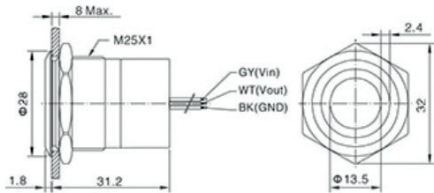
See wiring diagrams on page 50

25mm Illuminated



MC25

- ⬡ Illuminated
- ⬡ 300 mm lead

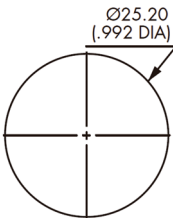


Specification

MC25

Type	Momentary / Latching
Materials	Case: Aluminium, Anodised and Stainless Steel  Multi-wire leads setion 0.22mm <sup>2</sup> (length 300mm)
Maximum Current / Voltage Rating:	500mA at 5V, 12V or 24VDC
Supply Voltage	5, 12 or 24 VDC
Contact Resistance	20mΩ
LED state for output image option	1 LED: The LED is ON when output is closed.  2 LEDs: First colour is ON when the output is open. Second colour is ON when the output is closed.
Actuating force, typically	Zero Newton's (Touch Sensitive)
Life cycle	>50 Million

Panel Cutout Dimensions



Panel cutout: Ø25.20 (.992 DIA)

Environmental Specification

Sealing	IP68 (2m depth for >30mins) IP69K
Operating temperature	-25°C to +55°C
RoHS	Compliant

Circuit Specification

See wiring diagrams on page 50

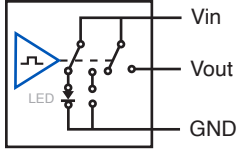
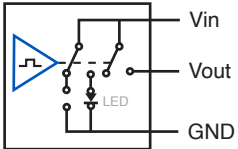
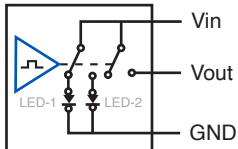
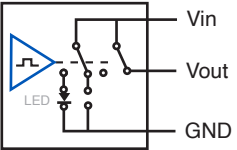
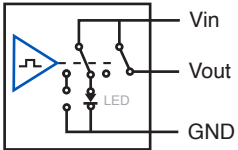
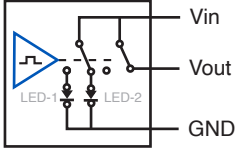
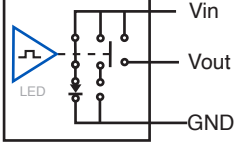
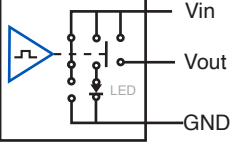
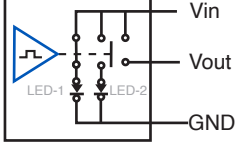
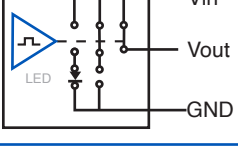
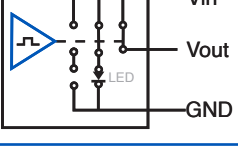
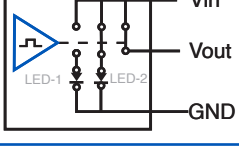
Part No System

MC	XX	X	X	X	XX	XX
Series	Switch Size	Switch Function	Switch Status	Colour / Material	LED Colours	Voltage
MC-Capacitive Switch	16 = 16mm	M = Momentary	O = Normally Open	B = Black Anodised	GN = GREEN (1 LED)	05 = 5VDC
	19 = 19mm	L = Latching	C = Normally Closed	R = Red Anodised	RD = RED (1 LED)	24 = 24VDC
	22 = 22mm			S = Stainless Steel	AM = AMBER (1 LED)	* No Suffix = 12VDC
	25 = 25mm				RG = RED + GREEN (2 LEDS)	
					GR = GREEN + RED (2 LEDS)	

**Note:**  
2 LED's option: when the output circuit open, first LED color lights. Second LED lights when the output circuit closes

**Examples:**  
MC16MOSRD = 16mm, Stainless Steel, Momentary Normally Open, Red Illumination, 12VDC  
MC22LOBRG24 = 22mm, Black Anodised, Catching Normally Open, Red and Green Illumination, 24VDC

Circuit Specifications

Wiring Diagrams				Legend
	1 LED		2 LEDS	
	Output Indicator	Output Indicator	Output Indicator	
OFF-ON (momentary) Normally Open				Grey Vin Black black GND White Vout  Wire colours may vary. Always refer to the label on the switch.
ON-OFF (momentary) Normally Closed				
OFF-ON (latching) Normally Open				
ON-OFF (latching) Normally Closed				

Other switches are available upon request\*